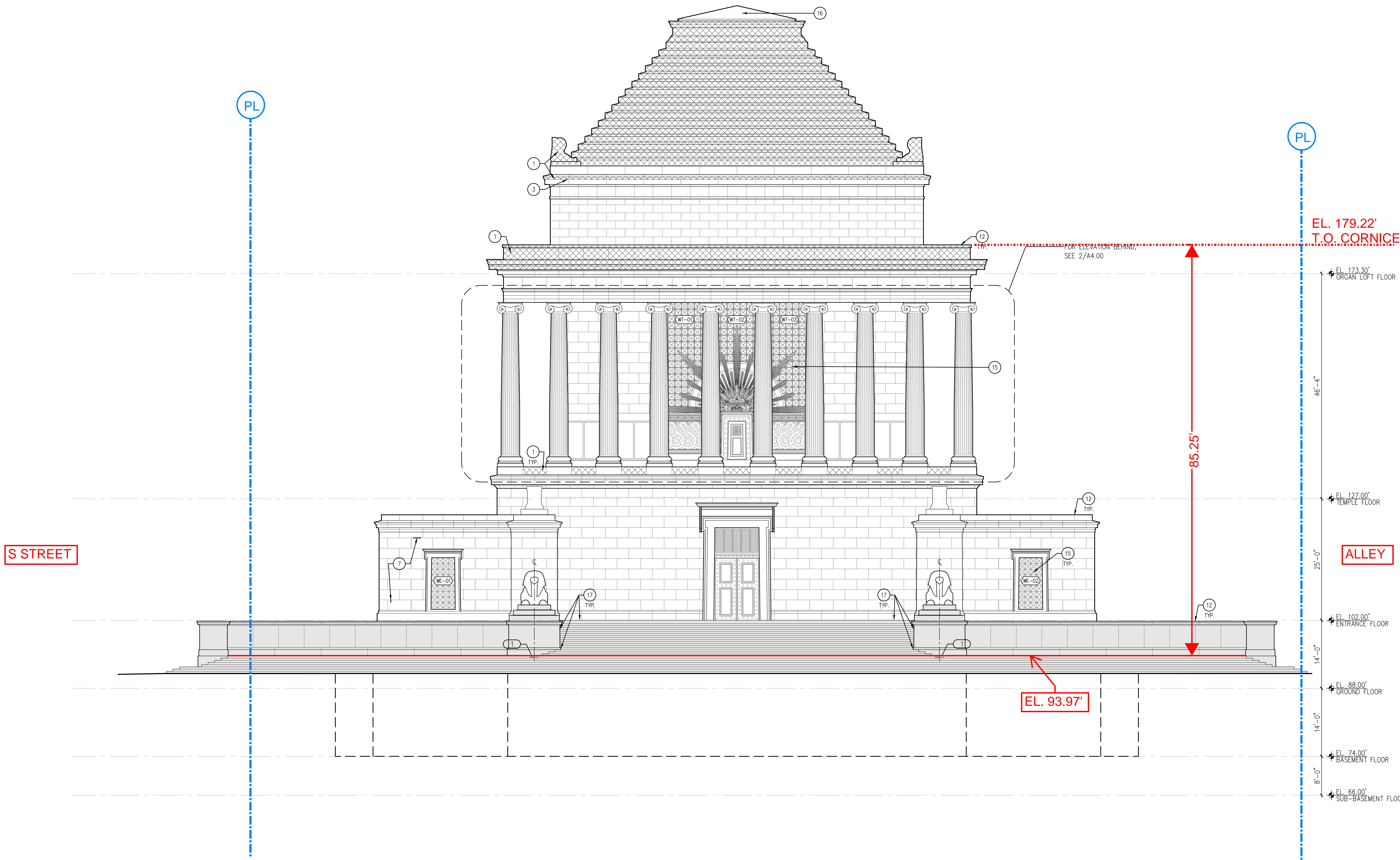


CODED NOTES

1 SIGNAGE FOR LOCATION OF ACCESSIBLE ENTRANCE, SEE 1/A9.60

Temple Height - Measured from 16th Street NW



OWNER
THE SUPREME COUNCIL 337
SCOTTISH RITE, SOUTHERN JURISDICTION
1733 16TH STREET, NW
WASHINGTON, DC 20009
202-332-3579

ARCHITECT
HARTMAN-COX ARCHITECTS, LLP
1074 THOMAS JEFFERSON ST. NW
WASHINGTON, DC 20007
202-333-6446

GENERAL CONTRACTOR OF RECORD
DPR CONSTRUCTION
2941 FAIRVIEW PARK DR.
FALLS CHURCH, VA 22042
703-698-0100

HISTORIC PRESERVATION CONTRACTOR
GRUNLEY CONSTRUCTION
15029 SHADY GROVE ROAD, SUITE 500
ROCKVILLE, MD 20850
240-399-2000

STRUCTURAL ENGINEERS
KCE STRUCTURAL ENGINEERS, PC
1818 JEFFERSON PLACE, NW
WASHINGTON, DC 20036
202-833-8624

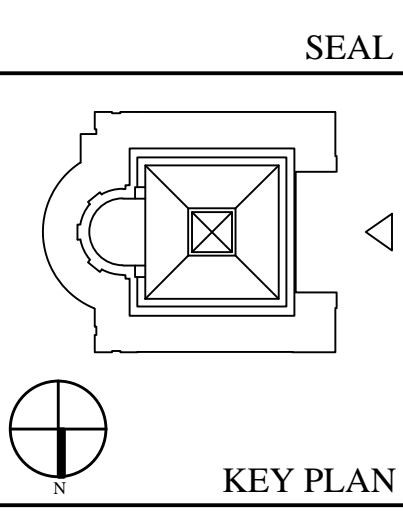
MECHANICAL ENGINEERS & CONTRACTOR
SHAPIRO & DUNCAN, INC.
1420 KOTHGEB DRIVE
ROCKVILLE, MD 20850
301-315-2139

ELECTRICAL ENGINEERS
DESIGN TECH, INC.
10410 KENSINGTON PARKWAY, #200
KENSINGTON, MD 20895
301-949-2688

ELECTRICAL CONTRACTOR
E.C. ERNST, INC.
1420 FITCHE MARLBORO ROAD
CAPITOL HEIGHTS, MD 20743
301-550-7770

SUBMISSION
01.26.15 100% CONSTRUCTION DOCUMENTS

HOUSE OF THE TEMPLE
1733 SIXTEENTH STREET NW
WASHINGTON DC



DRAWING TITLE
WEST ELEVATION

SCALE
1/8"=1'-0"

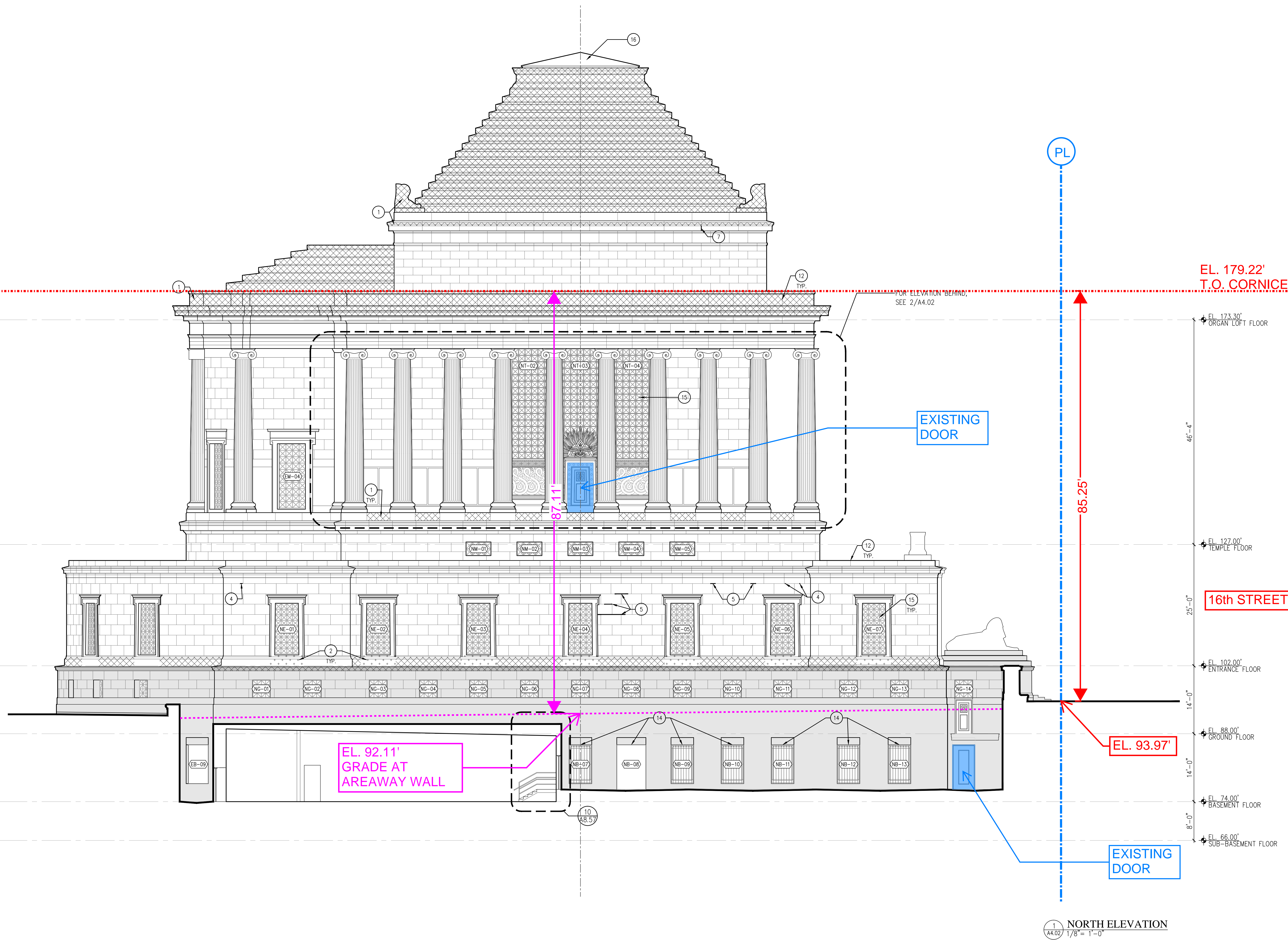
DATE
JANUARY 26, 2015

A4.00

Board of Zoning Adjustment
District of Columbia
©2015 HCA/DC/DA

WEST ELEVATION
1/8"=1'-0"

Temple Height - Measured from S Street NW



OWNER
THE SUPREME COUNCIL, 3P
SCOTTISH RITE, SOUTHERN JURISDICTION
1733 16TH STREET, NW
WASHINGTON, DC 20009
202-232-3579

ARCHITECT
HARTMAN-COX ARCHITECTS, LLP
1074 THOMAS JEFFERSON ST, NW
WASHINGTON, DC 20007
202-333-6446

GENERAL CONTRACTOR OF RECORD
DPR CONSTRUCTION
2941 FAIRVIEW PARK DR
FALLS CHURCH, VA 22042
703-698-0100

HISTORIC PRESERVATION CONTRACTOR
GRUNLEY CONSTRUCTION
15029 SHADY GROVE ROAD, SUITE 500
ROCKVILLE, MD 20850
240-599-2000

STRUCTURAL ENGINEERS
KCE STRUCTURAL ENGINEERS, PC
1818 JEFFERSON PLACE, NW
WASHINGTON, DC 20036
202-833-8624

MECHANICAL ENGINEERS & CONTRACTOR
SHAPIRO & DUNCAN, INC.
1420 KOTHEB DRIVE
ROCKVILLE, MD 20850
301-315-2139

ELECTRICAL ENGINEERS
DESIGNTECH, INC.
10410 KENSINGTON PARKWAY, #200
KENSINGTON, MD 20895
301-949-2688

ELECTRICAL CONTRACTOR
E.C. ERNST, INC.
1420 RITCHE MARLBORO ROAD
CAPITOL HEIGHTS, MD 20743
301-550-7770

SUBMISSION
01.26.15 100% CONSTRUCTION DOCUMENTS

HOUSE OF THE TEMPLE
1733 SIXTEENTH STREET NW
WASHINGTON DC

SEAL

KEY PLAN

DRAWING TITLE
NORTH ELEVATION

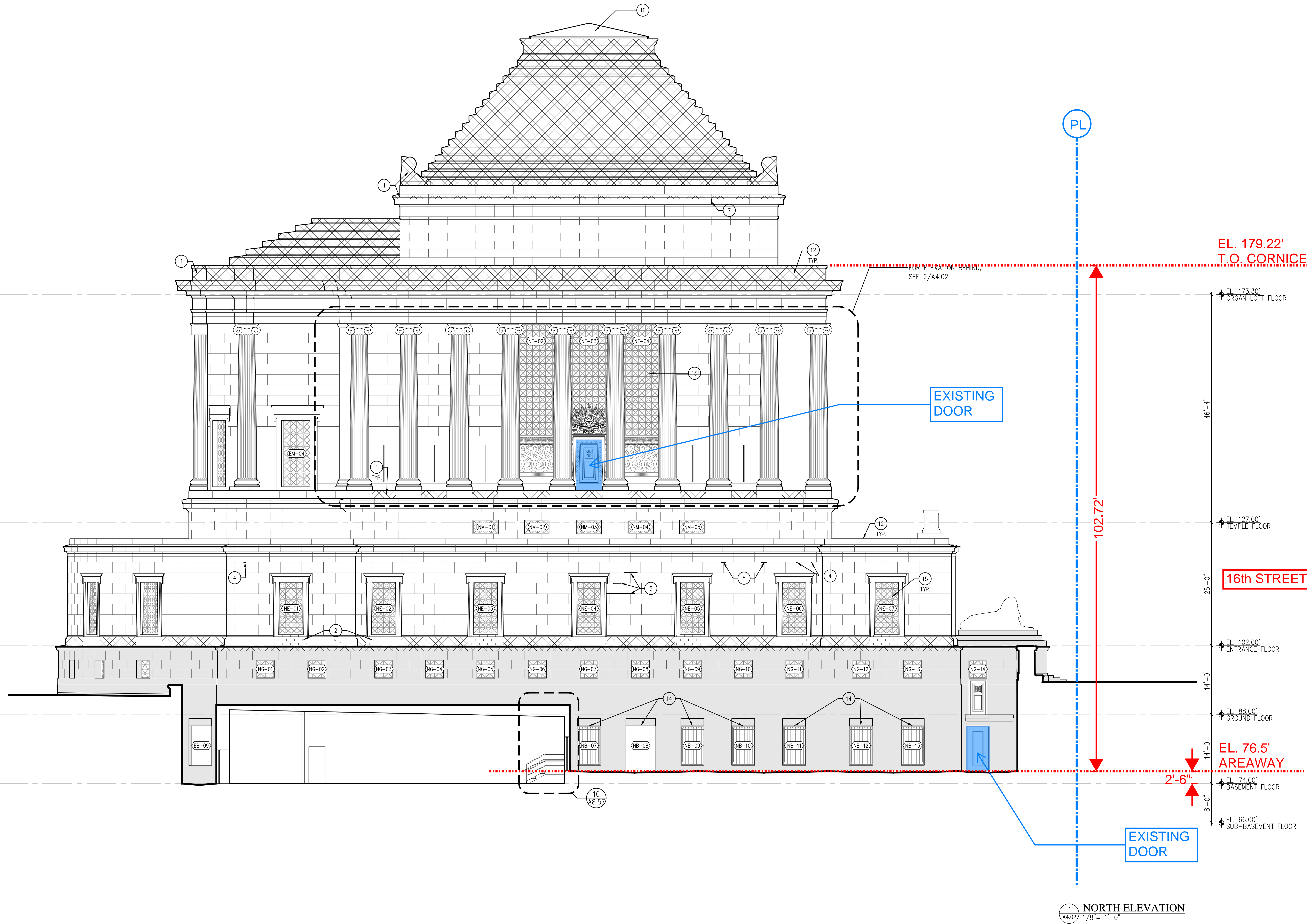
DATE
JANUARY 26, 2015

SCALE
1/8" = 1'-0"

16"
8"
4"

A4.02A

Temple Height - Measured from 16th Street NW (bottom of areaway)



1 NORTH ELEVATION
A4.02 1/8" = 1'-0"

OWNER
THE SUPREME COUNCIL, 3P
SCOTTISH RITE, SOUTHERN JURISDICTION
1733 16TH STREET, NW
WASHINGTON, DC 20009
202-232-3579

ARCHITECT
HARTMAN-COX ARCHITECTS, LLP
1074 THOMAS JEFFERSON ST, NW
WASHINGTON, DC 20007
202-333-6446

GENERAL CONTRACTOR OF RECORD
DPR CONSTRUCTION
2941 FAIRVIEW PARK DR.
FALLS CHURCH, VA 22042
703-698-0100

HISTORIC PRESERVATION CONTRACTOR
GRUNLEY CONSTRUCTION
15029 SHADY GROVE ROAD, SUITE 500
ROCKVILLE, MD 20850
240-599-2000

STRUCTURAL ENGINEERS
KCE STRUCTURAL ENGINEERS, PC
1818 JEFFERSON PLACE, NW
WASHINGTON, DC 20036
202-833-8624

MECHANICAL ENGINEERS & CONTRACTOR
SHAPIRO & DUNCAN, INC.
1420 KOTHGEB DRIVE
ROCKVILLE, MD 20850
301-315-2139

ELECTRICAL ENGINEERS
DESIGNTECH, INC.
10410 KENSINGTON PARKWAY, #200
KENSINGTON, MD 20895
301-949-2685

ELECTRICAL CONTRACTOR
E.C. ERNST, INC.
1420 RITCHE MARLBORO ROAD
CAPITOL HEIGHTS, MD 20743
301-580-7770

SUBMISSION
01.26.15 100% CONSTRUCTION DOCUMENTS

HOUSE OF THE TEMPLE
1733 SIXTEENTH STREET NW
WASHINGTON DC

SEAL
KEY PLAN

DRAWING TITLE
NORTH ELEVATION

DATE
JANUARY 26, 2015

SCALE
1/8" = 1'-0"

16"
8"
4"

A4.02B